

ZEX-0209-A

Central electrics

CHARACTERISTICS

- Suitable for 12 V and 24 V applications
- Power supply via M5 power socket up to max. 70 A
- 7 fuse sockets for ATO fuses (for standard ATO fuses) up to max. 15 A
- 2 additional sockets for ATO fuses up to max. 30 A to protect the relay
- 2 mini relay sockets, 5-pin
- Rear connector 18-pin, 3 rows – JPT and MCP compatible
- High thermal load capacity
- Shock and vibration resistant
- Also available with populated board (relays, fuses resp. automatic circuit breakers suppressor diodes)

TECHNICAL DATA

- Operational temperature: -40°C to $+85^{\circ}\text{C}$
- Max. power supply: Max. 70 A at 65°C ambient temperature; max. 65 A at 80°C ambient temperature
- Input: Power element socket M5, max. torque: 2.2 Nm (other designs on request)
- Output: Connector 3 rows, 18-pin, JPT/MCP compatible
- Recommended cable cross-section for connector:
Current $\leq 15\text{ A}$: 7.5 A per mm^2
Current $> 15\text{ A}$: 5 A per mm^2

APPLICATIONS

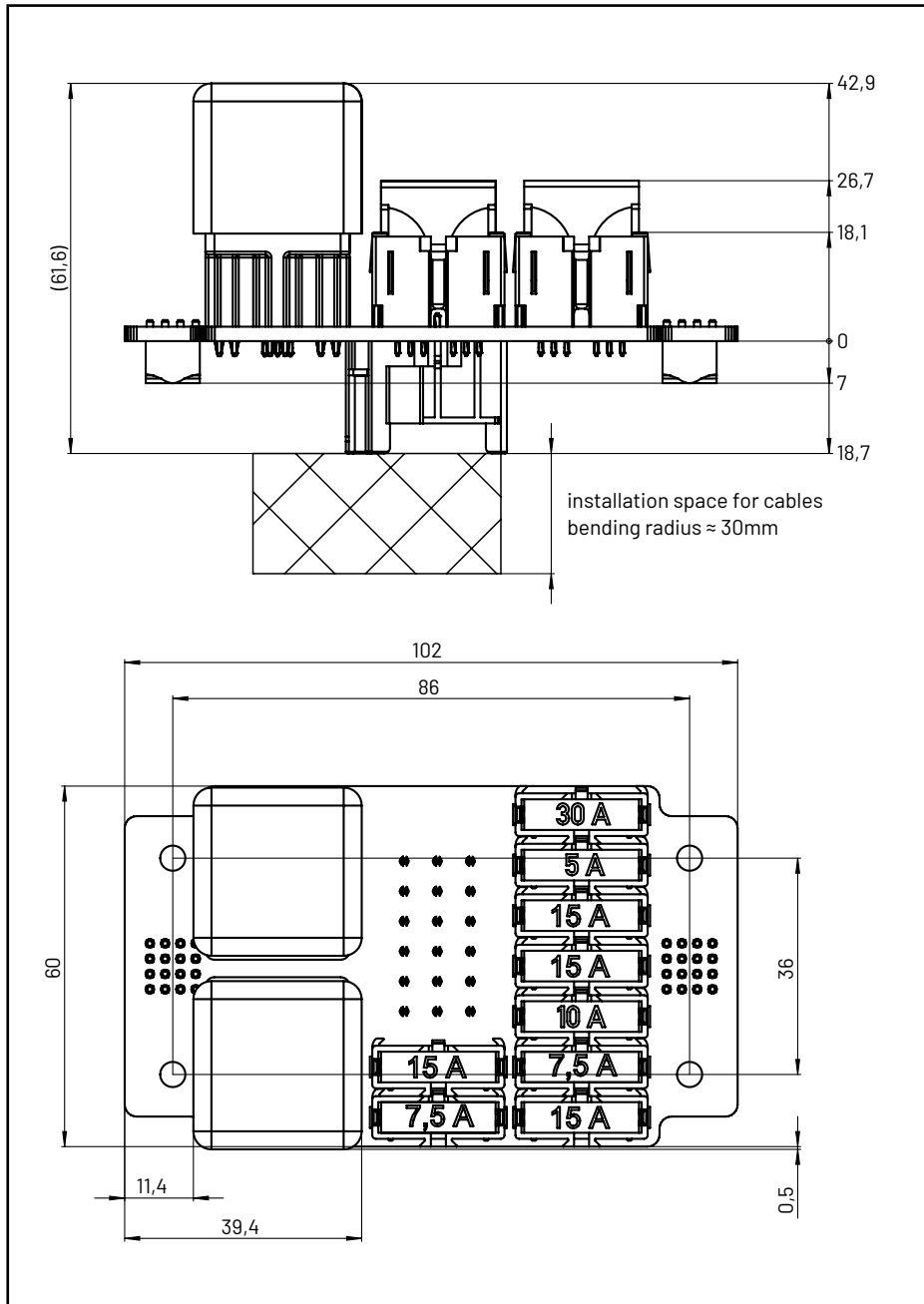
- Power distribution (for typical functionalities) in the automotive sector, such as alternators, control and display devices, radio, accessories etc.
- Can be used individually or modularly

Sensor-Technik Wiedemann GmbH

Am Bärenwald 6
87600 Kaufbeuren

+49 8341 9505-0
info@sensor-technik.de
www.stw-mm.com

TECHNICAL DRAWING



ELECTRIC CIRCUIT DIAGRAM

